

Setup Your IDX Frame Pages

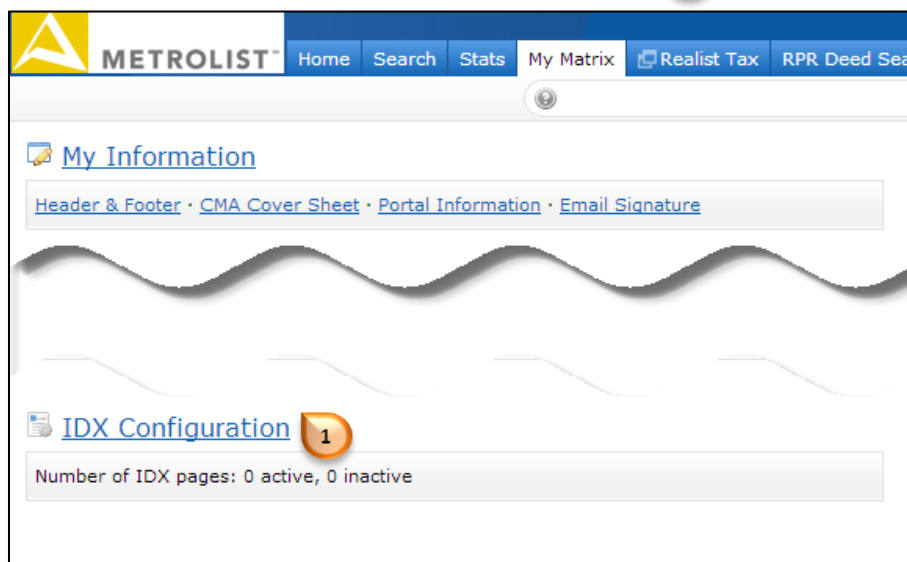
If you have purchased the IDX Frame product, you'll need to set it up in Matrix. You can create the following type of pages for your website:

- Map search for Active and Under Contract listings
- Map search for listings Sold within the past 3 years
- A "My Listings" page that will display your listings

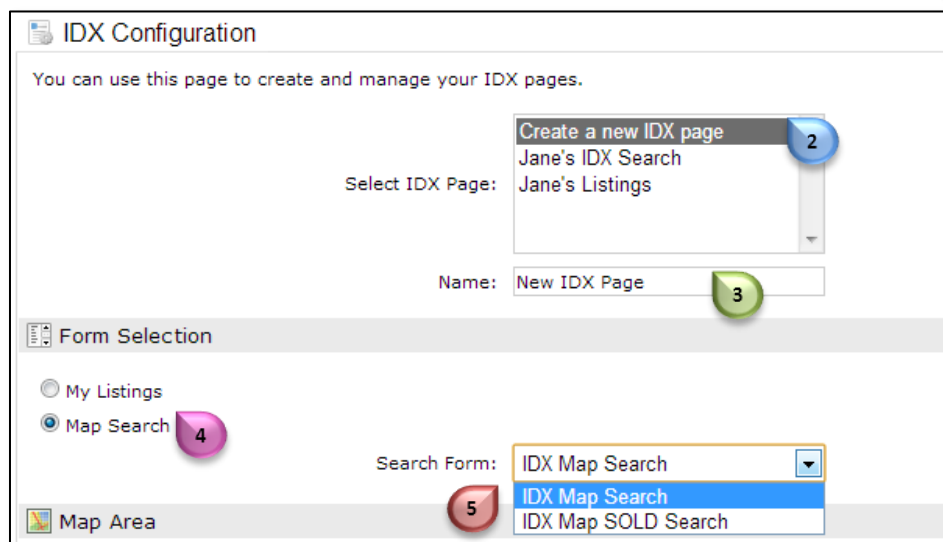
For each page you create, Matrix will generate HTML code that you can either place in your website or provide to your website developer.

Creating a Search Page for Your IDX Site

- Go to **My Matrix, Settings, and then IDX Configuration.** 1



- Select **Create a new IDX Page.** 2
- Enter a name for your page. 3
- To create the search page for your site, make sure **Map Search** is selected. 4



Setup Your IDX Frame Pages

- Under **Search Form**, choose the type of search page you would like to create: **5**
 - **IDX Map Search:** Includes Active and Under Contract listings.
 - **IDX Map SOLD Search:** Includes only listings that were sold within the past three years.
- Determine how you want to setup your map search. You have three options: **6**
 - **Do not specify a map area:** The map will open to the default search area. Visitors to your website will be able to move around on the map and search in any area using radius and rectangle searches.
 - **Restrict searches to a specified map area:** This option allows you to restrict the results to a specific geographic area. You might like this option if you have a defined market area in which you work.
 - **Specify an initial map view:** This option allows you to specify the starting point of the map. Visitors to your website can still move around on the map and search in other areas using radius and rectangle searches.
- If you selected “Restrict searches to a specified map area” or “Specify an initial map view”, click **Set Map Area.** **7**

Map Area

6 Do not specify a map area.

Restrict searches to a specified map area.

Specify an initial map view. Users are free to search outside this area.

7 [Set Map Area](#)

- Move the map to your desired location, then click **Save.** **8**



- Activate your IDX page by selecting **IDX Enabled.** **9**
- If you want to use your IDX pages for lead generation and allow visitors to register, select **Include Sign-Up Form**, and enter a **Sign-Up Message.** **10**

Setup Your IDX Frame Pages

Note: When you choose this option, any visitors that sign up on your page will be directly entered into your Matrix account allowing you to easily convert them into a contact.

🔑 **Activation**

9
 IDX Enabled

IDX Disabled

HTML:

Referring Page:

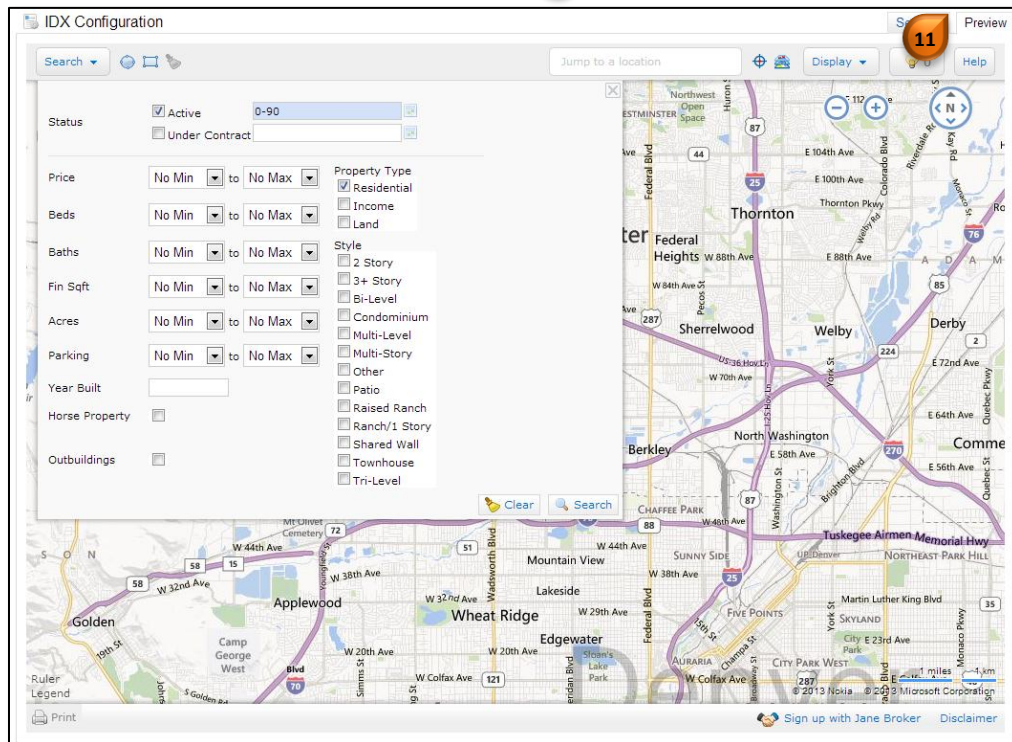
🔧 **Other Options**

10
 Include Sign-Up Form

Sign-Up Message:

⬅️ Back to Settings
✖ Delete
Save

- Go to the **Preview** tab to see your IDX page. 11



- After reviewing your search, return to the **Settings** tab and click **Save**. 12
- Matrix will generate HTML code that you can copy and paste into your website or provide to your website developer. 13

Setup Your IDX Frame Pages

Activation

IDX Enabled
 IDX Disabled

13 HTML: `<iframe src="http://matrix.recolorado.com/Matrix/public/IDX.aspx?idx=bfd611" width="1024px" height="720px" frameborder="0">`

Referring Page:

Other Options

Include Sign-Up Form

Sign-Up Message:

[Back to Settings](#) [Delete](#) [Save](#) 12

Creating a My Listings Page for Your IDX Site

The My Listings page will display a list of your listings.

Note: It is not possible for a consumer to edit the search criteria from a My Listings page. If you have no listings, they will see a page with no search results.

- Go to the IDX Configuration page (**My Matrix, Settings, and then IDX Configuration**).
- Select **Create a New IDX page**. 1
- Enter a name for your page and select **My Listings** under Form Selection. 2
Note: If you are a managing broker, you'll have an option for "My Office Listings" in the My Listings Query dropdown.
- Select **IDX Enabled** under Activation. 3

IDX Configuration

You can use this page to create and manage your IDX pages.

Select IDX Page: 1

Name:

Form Selection

My Listings 2
 Map Search

My Listings Query:

Activation

IDX Enabled 3
 IDX Disabled

Setup Your IDX Frame Pages

- Under **Other Options**, you have several options to customize the My Listings page colors. To modify a color, click the color block next to the color option. **4**
- **Note:** The Page Background color will be shown on both the Single Line and IDX Full displays on your My Listings page.
- Adjust the color, then click **Done**. **5**
- After you are finished making adjustments, go to the **Preview** tab to review your page.

Other Options

Page background color: #ffffff

Header background color: #e0e0e0

Header font color: #000000

Button style: Default

Back to Settings Delete Save

Done

- After you have reviewed your page, return to the **Settings** tab and click **Save**. **6**
- Matrix will generate HTML code that you can copy and paste into your website (or provide to your website developer). **7**

Activation

IDX Enabled
 IDX Disabled

HTML: `<iframe src="http://matrix.recolorado.com/Matrix/public/IDX.aspx?idx=f2cb18" width="1024px" height="720px" frameborder="0">`

Retrieving Page: _____

Other Options

Page background color: #e2dfe8

Header background color: #5a65b4

Header font color: #ebe9f6

Button style: Default

Back to Settings Delete Save

Setup Your IDX Frame Pages

Leads from Your IDX Pages

Consumers that visit your website will be able to sign up with you. These leads are delivered directly to your Matrix dashboard!



- If you've selected "Include sign-up form" for your IDX map search pages, the bottom of your Map Search IDX pages will include **Sign up** link. 1
- Consumers will be able to complete a basic registration form. If they have marked any listings as Possibilities, they can send these listings to you when they register. 2

✕

Sign up with Jane Broker 2

Welcome to Jane's IDX Search! Please register so that I can help you with your home search!

Required

First Name

Last Name

Email Address

Optional

Phone Number

Message

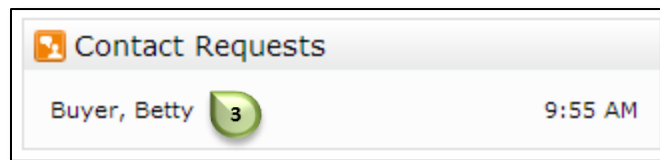
Include your possibilities? (So I know what you're looking for.)

[Privacy Policy](#)

✕ Cancel ✉ Send

Setup Your IDX Frame Pages

- When you get leads from your IDX site, you'll see these in the **Contact Requests** widget on your Matrix Dashboard. Click their name to view the contact request. 3



- You'll see the information that the consumer entered on your IDX site. If they selected listings as possibilities, you'll see a note "This request includes a set of listings of interest. These listings will be added as possibilities if the contact is added."
 - Click **Add** to add the consumer to your Contact list in Matrix. 4
 - Click **Cancel** to leave the consumer in your Contact Requests list.
 - Click **Delete** if you do not want to add the consumer to your Contact list in Matrix.

👤 Personal Information

Title: <input type="text"/>	Category: Prospect ▼
First Name: Betty	Last Name: Buyer
Email Address: metrolistbeta2@gmail.com	
Phone: <input type="text"/>	Cell: <input type="text"/>

📝 Notes

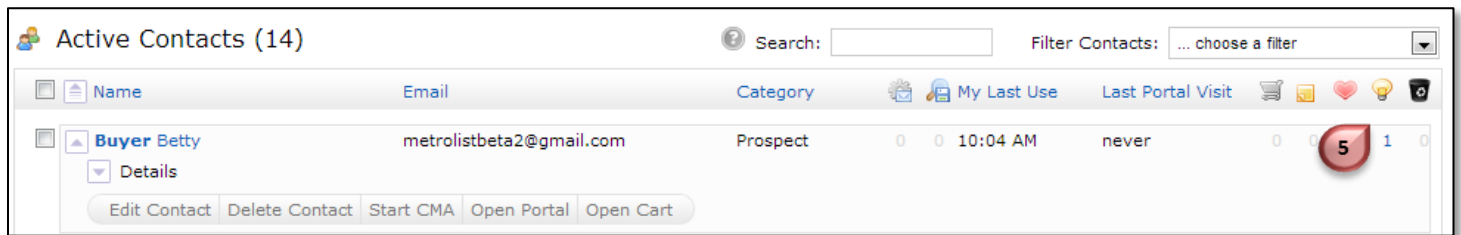
Initial contact message received 2013/10/14

This request includes a set of listings of interest. These listings will be added as possibilities if the contact is added.

+ Show All Fields
✖ Delete
✖ Cancel
➕ Add
4

- After you've added the consumer as a contact, you can view your Contact list by going to **My Matrix**, and then **Contacts**.
- You'll be able to click the number of possibilities to view the listings that they liked. When you begin emailing listings to this new contact or create an Auto Email for them, their possibilities will already be included in their Client Portal. 5

Setup Your IDX Frame Pages



Other Notes

- You can create a maximum of 5 IDX pages.
- When a consumer first visits either the Active/Under Contract or Sold search pages on your website, they will see a User Agreement that must be acknowledged before they can start searching.

